



# Eco Solvent Printer

2.5/3.2m , Epson DX5/XP600/I3200 Printhead

Dual Heads

4/6 Color

Variable Dot

3-Stage Heater



[www.colorwinmachines.com](http://www.colorwinmachines.com)

# Eco Solvent Printer | W2512&W3212

## ● Features



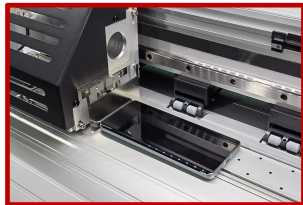
### Different Printhead Available

Epson DX5,XP600, i3200 printheads available. Meet the requirement of different clients.



### Big Functional Control Panel

Adopts the latest program Intelligent Error Auto-Detection boards, it can guide user to find solution very quickly.



### Anti-collision Function

Anti-collision system is equipped to protect the printhead and carriage all the time.



### High Quality Branded Guide Rail

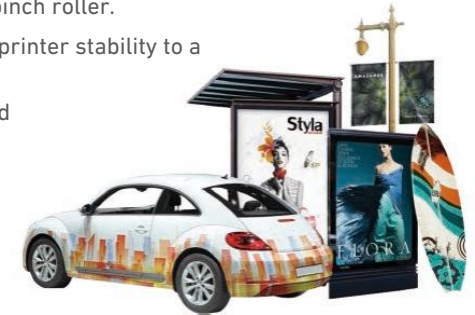
Equipped Epson XP600/DX5/I3200 Head.



### Large capacity ink supply

Intelligent ink supply system, constant liquid level, to ensure high speed and high output of printing ink, capacity up to 2000ml.

- ★ Control the front, middle and rear heater in one place. Integrated heater controller have less fault than separate ones.
- ★ Wide pinch roller keeps smooth movement of the media. And it has proper pressure to ensure accurate media step while not make any footprint of the pinch roller.
- ★ IGUS drag chain itself is a guarantee of quality, takes the printer stability to a new level. Effectively protect ink tube and cables
- ★ Automatic up&down ink station, automatic cleaning closed heads nozzles, so that the heads nozzles are always in good condition.



## ● Specification

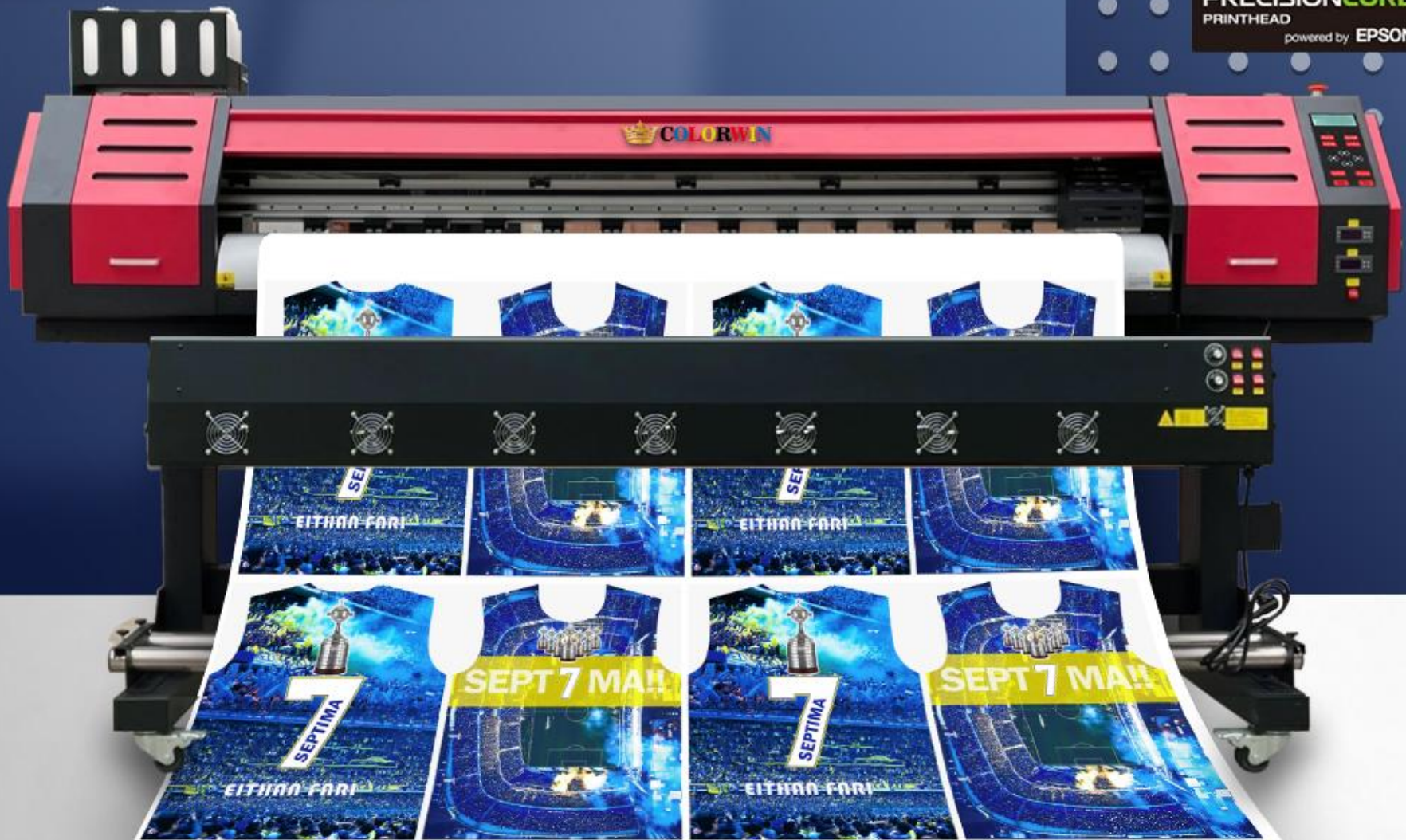
Model NO.	W2512	W3212	
Printhead	2 Epson XP600/DX5/I3200 heads		
Resolution(dpi)	2880dpi		
Media	Width	2.5m	3.2m
	Types	Flex Banner, Vinyl, One Way Vision, Banner Cloth, Window Film, Mesh...	
Speed	4 pass	40 sqm/h	45 sqm/h
	6 pass	20 sqm/h	25 sqm/h
	8 pass	15 sqm/h	18 sqm/h
Ink Color	CMYK	CMYK	
Ink Type	Eco Solvent Ink		
Ink Droplet	1.5-21pl Variable		
Cleaning	Automatic Cleaning, Anti-Clogging Flash Function & Capping System		
Feed & Take Up	Automatic Media Feeding (Standard) & Take Up System (Optional)		
Environment	Temperature: 20-28°C, Humidity: 40-60%		
Rip Software	Maintop (Standard) / PhotoPrint (Optional)		
Interface	USB3.0		
Power	Machine 50/60HZ, 110/220V, 2500W		
Packing size/weight	3820x740x760mm/400kg	4420x740x760mm/450kg	

# Eco Solvent Printer

1.6M, 1.8M EPSON XP600/DX5/I3200 HEADS



**PRECISIONCORE**  
PRINTHEAD  
powered by EPSON



# Eco Solvent Printer | W161&W1812

## ● Features



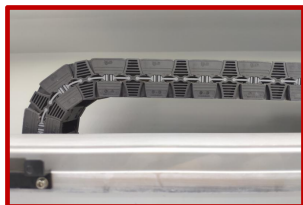
### Different Printhead Available

Epson DX5, XP600, i3200 printheads available. Meet the requirement of different clients.



### Wide Pinch Roller

Wide pinch roller keeps smooth movement of the media. And it has proper pressure to ensure accurate media step while not make any footprint of the pinch roller.



### IGUS Drag Chain from Germany

IGUS drag chain itself is a guarantee of quality, takes the printer stability to a new level. Effectively protect ink tube and cables.



### Smooth winding

Double steel pipe constant force high precision cloth feeding system, to ensure the continuous smooth transmission of paper.



### Large capacity ink supply

Intelligent ink supply system, constant liquid level, to ensure high speed and high output of printing ink, capacity up to 2000ml.

★ New look has heavier, larger structure, and wider printing platform

★ Big Functional Control Panel. Adopts the latest program Intelligent Error Auto-Detection boards, it can guide user to find solution very quickly

★ IGUS Drag Chain from Germany. A guarantee of quality, takes the printer stability to a new level. Effectively protect ink tube and cables

★ LED lamp strip is equipped, users could check out the print result more easily

★ Optional infrared heater for drying prints quickly



## ● Specification

Model NO.	W161	W1612	W181	W1812	
Printhead	1/2 Epson XP600/DX5/I3200 heads				
Resolution(dpi)	1440dpi	2880dpi	1440dpi	2880dpi	
Media	Width	1.6m		1.8m	
	Types	Flex Banner, Vinyl, One Way Vision, Banner Cloth, Window Film, Mesh...			
Speed	4 pass	20 sqm/h	25 sqm/h	20 sqm/h	30 sqm/h
	6 pass	15 sqm/h	19 sqm/h	15 sqm/h	22sqm/h
	8 pass	10 sqm/h	14 sqm/h	10 sqm/h	15sqm/h
Ink Color	CMYK				
Ink Type	Eco Solvent Ink				
Ink Droplet	1.5-21pl Variable				
Cleaning	Automatic Cleaning, Anti-Clogging Flash Function & Capping System				
Feed & Take Up	Automatic Media Feeding (Standard) & Take Up System (Optional)				
Environment	Temperature: 20-28°C, Humidity: 40-60%				
Rip Software	Maintop (Standard) / PhotoPrint (Optional)				
Interface	USB3.0				
Power	Machine 50/60HZ, 110/220V, 1200W				
Packing Size & Weight	2700x750x750mm / 160 KG		2950x750x750mm / 190 KG		

Specifications are subject to change without notice.



# Embroidery Machine | T1201&2&3&4&6&8

## ● Features



### Different Printhead Available

The latest embroidery system Easy-to-use touch screen 13 languages supported



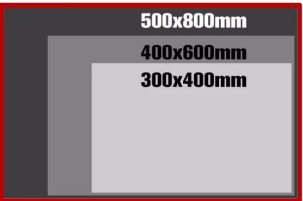
### Wide Pinch Roller

9 / 12 / 15 needle optional 1200 Rpm/Min



### Big working areas

Support Flat, Cap, T-shirts, Shoes, Bags embroidery and more



### offer multiple sizes of embroidery

Our embroidery machines can offer multiple sizes of embroidery area available



### Powerful functions

Full computer operating system, and optional equipment can be used to obtain more functions, which is undoubtedly the best choice



Flat embroidery



Cap embroidery



Garments embroidery



Bag embroidery



Patch embroidery



Shoe embroidery



Pillow embroidery



Socks embroidery

## ● Specification

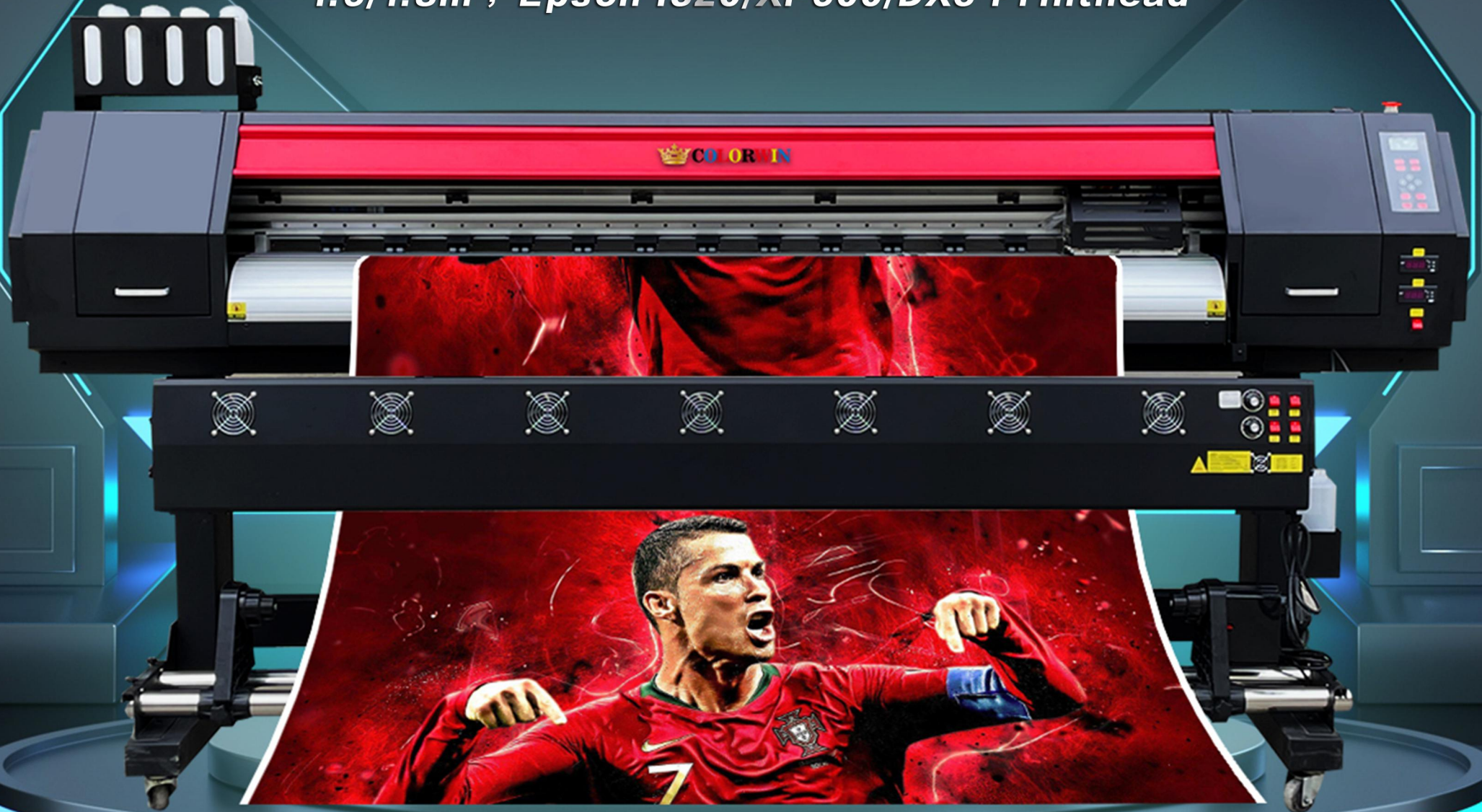
Model NO.	T-1201	T-1202	T-1203	CUSTOMIZABLE
Multi-function Cap Embroider Garment				
Head	1	2	3	color, size, function, controller, working area all can be customized
Embroidery Area	350mm x 500mm	400*500mm	400x450mm	
Needle	9/12/15 Needles			
Speed	High speed 1200 Rpm			
Computer Control System	10" LCD Touch Screen			
Support Language	Chinese / English / العربية / Türk dili / Español / русский / Português / Français / ประเทศไทย / Nederlandse taal / Deutsch / lingua italiana / Polski			
Voltage	AC 110V-230V; 50/60HZ; 150W			
Weight (KG)	USB//WIFI			
Weight (KG)	200KG	440KG	520KG	
Application	Cap Embroidery , Hat Embroidery , T-shirt Embroidery , Flat Embroidery , Shoe Embroidery , Pocket Embroidery etc			
Packing size	1110*840*880mm	1480x1030x1050mm	1750x1030x1050mm	

Specifications are subject to change without notice.



# Sublimation Printer

1.6/1.8m , Epson I320/XP600/DX5 Printhead



[www.colorwinmachines.com](http://www.colorwinmachines.com)

# Sublimation Printer | S161&S1612

## Features 特点



### Different Printhead Available

Epson DX5,XP600, i3200 printheads available.  
Meet the requirement of different clients.



### Integrated Temperature Control

Control the front, middle and rear heater in one place. Integrated heater controller have less fault than separate ones.



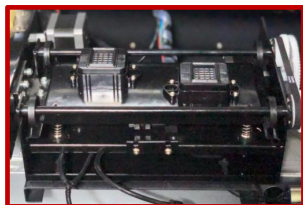
### Heating and Drying System

Front and middle and rear heating system, front drying fan are standard equipped to help dry the printed material fast.



### Branded parts

Greatly increased the lifetime and stability of the machine. For example,Hiwin guide rail,German Iigus drag chain, Italian Megadyne belt.



### ink station

Automatic up&down ink station, automatic cleaning closed heads nozzles, so that the heads nozzles are always in good condition.



## Specification 参数

ModelNO.	S161	S1612	S181	S1812	
Printhead	1/2EpsonXP600/DX5/I3200heads				
Resolution(dpi)	1440dpi	2880dpi	1440dpi	2880dpi	
Media	Width	1.6m	1.8m		
	Types	Sublimation paper			
Speed	4 pass	20sqm/h	25sqm/h	20sqm/h	30sqm/h
	6 pass	15sqm/h	19sqm/h	15sqm/h	22sqm/h
	8 pass	10sqm/h	14sqm/h	10sqm/h	15sqm/h
InkColor	CMYK				
InkType	SublimationInk				
InkDroplet	1.5-21plVariable				
Cleaning	AutomaticCleaning,Anti-CloggingFlashFunction&CappingSystem				
Feed&TakeUp	AutomaticMediaFeeding(Standard)&TakeUpSystem(Optional)				
Environment	Temperature:20-28°C,Humidity:40-60%				
RipSoftware	Maintop(Standard)/PhotoPrint(Optional)				
Interface	USB3.0				
Power	Machine50/60HZ,110/220V,1200W				
PackingSize&Weight	2700x750x750mm/160KG		2950x750x750mm/190KG		

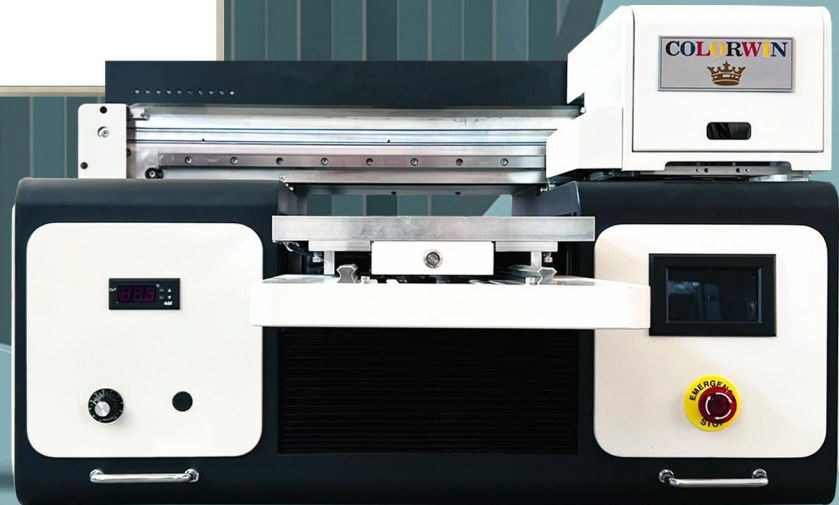
Specifications are subject to change without notice.



# DTF TEXTILE PRINTER



# UV+DTF Printer



# UV+DTF Printer

## Features



### Metallurgical bonding and sensor embedding technology

It is made by Joule printing technology that melts metal wires with electric current.



### Smart Control System

One-time mold aluminum carriage beam  
Ensure high accuracy of carriage movement



### Heavy Duty Design

Super strong motor power makes printing powerful and stable



### Ink station System

No need to use the vinyl cutter. This is new technology, it saves labor and complicated processes, more easy to operate.



### Ink supplies System

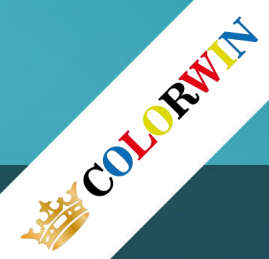
Permitting the printer to provide smooth gradations, exceptional solid colors and optimum image quality in all print modes.



## ● Specification

Model	A3UV+DTF
Printhead	2EpsonXP600/DX800heads
Color&Page	CYMK+W
Voltage	110V/220V
Printingsize	30X50CM
Printingheight	20cm
InkType	UVInks
Coolingmethod	water cooling
Resolution	2880DPI
Materials	UV PET Film30cm*50cm
Imageformat	PNG,PDF,TIF,JPG,ETC.
Printspeed	5Minutes/A4withcolor&white
Application	IrregularItems, like mug,bottles,pens,cooler,wood,acrylic,phone case,leather,etc.
Software	maintop
Environment	Temperature:20-28°C,Humidity:40-60%
PackingSize&Weight:	0.81x1.13x1.05m , 120KG

Specifications are subject to change without notice.



# A3 6090 UV PRINTER



[www.colorwinmachines.com](http://www.colorwinmachines.com)

# A3 1015 UV Printer | A3 & 1015

## Features



### UV Led Lamp

Usually lasting for tens of thousands of hours, with no need for frequent replacement, reducing the cost of use.



### HIWIN Rail

High accuracy and stability can improve the performance and efficiency of the printer



### Durable Power

Stable power output technology ensures the normal operation of the printer.



### Hiwin Mute Slider

The use of high-quality materials and precision manufacturing processes has high durability and abrasion resistance.



### Leadshare Servo Motor

Higher accuracy and efficiency can be achieved, improving printing quality and production efficiency.



## ● Specification

### SPECIFICATIONS FOR A3-1015 UV MODEL UV FLAT BED PRINTER

Printhead	TX800head/DX5/DX7/XP600	Computersystem	Window7/window10
	CMYK+White color	Printresolution	720/1080/1440/2160dpi max.
	3.5pl	Ink type	UVhard&softink
Ink system	Opened bulk ink system	Print height	20CM
	white ink circulation system	Filetype	JPEG, TIFF, PDF, EPS etc
	inkless alarm system	Drying system	UVled
Control system	Independent development board	Cooling system	Water cooling
	3D defect function	Machine size	L960XW980XH600mm
	Support Maintop/Photoprint RIP	NET Weight	100KG

Specifications are subject to change without notice.

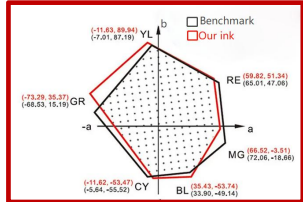
# Galaxy Eco Solvent Ink

Wide using of world. non-poisonous,  
Little smell without any HAPS ( MSDS report )



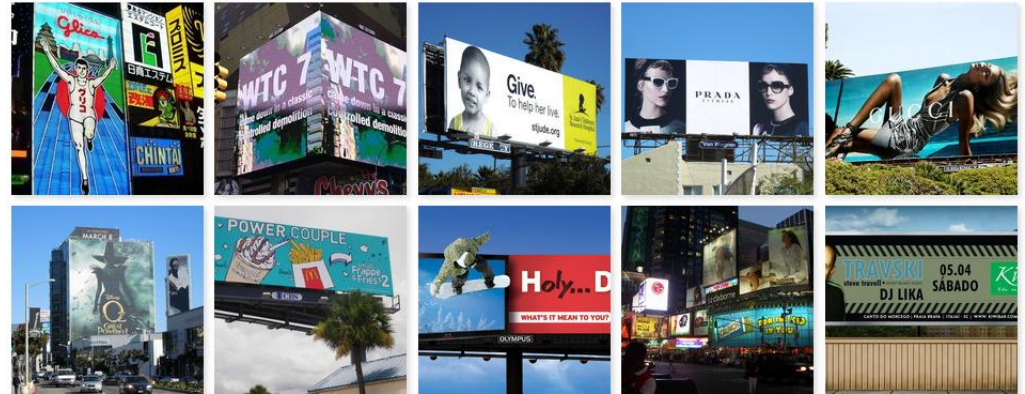
# Galaxy Eco Solvent Ink

## Features



### Durability

Anti-Uv. anti-oxidation avoid fadeless





**OEM**  
OEM&ODM

According to customer requirements and products, ODM/OEM services to customers around the world.



**Quality assurance**

Product quality assurance with a product license to provide the perfect after-sales service.

### Quality assurance

Product quality assurance, with a product license to provide the perfect after-sales service.

## ● Specification



### Excellent Fluency

According OEM ink +/-0.03 to be produced, smooth printing with nozzle



### Brilliant Color

With strictly selected imported raw material, high color saturation, wide color gamut



### Slightly smell

Wide using of world. non-poisonous, Little smell without any HAPS ( MSDS report )

Ink Type	Galaxy Eco Solvent Ink
Suitable printers	Epson dx5, XP600, DX7 printhead printer galaxy, meitu, JHF...Chinese printer
Color	C,M,Y,K
Package	1000ml, 20pcs/carton
Advantage	<ol style="list-style-type: none"> <li>1. Truly environment-friendly</li> <li>2. Vibrant, bright colors and wide color gamut</li> <li>3. Anti-alcohol resistance</li> <li>4. Small smell and no odor</li> <li>5. Highly glossy, ink stable, fluency</li> </ol>
Physical Parameters:	Smell: Slightly PH: 6.5-7.5 Viscosity: 3-10cp FlashPoint: 72° C (colsed cup) Surface Tension: 25-35 dynes/cm Particle Size: <0.2u
Applications	PVC, car wrap, outdoor advertising, frontlit, backlit, Vinyl, canvas, wallpaper, banner, etc....
Operation:	Temperature: 18 to 30°C / 64 to 86°F Relative Humidity: 25% to 70% Non-condensing.

# WITCOLOR ECO SOLVENT INK





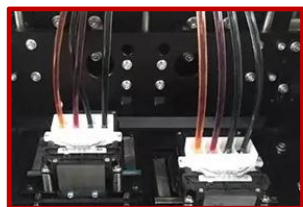
# Witcolor Eco Solvent Ink

## Features



### Non-toxicity

low odor, extreme low VOC, and friendly to human being and environment.



### Imported raw materials

good dispersion stability, no plugging.



### Waterproof, wear-resistant and not easy to decolorize



### Natural and beautiful color.



### Green environment protection

It does not contain toxic solvents such as benzene and has less odor.



## ● Specification

InkType	EcoSolventInk
Suitable printer	wit color printer Chinese printer Epson DX5 printer mimaki, mutoh, roland printer
Color	C, M, Y, K
Package	1000ml, 20pcs/carton
Advantage	<p>Features:</p> <ol style="list-style-type: none"> <li>1. Smooth printing with nozzle clogging-free, and stable output quality;</li> <li>2. Compatible with most inkjet media;</li> <li>3. high color reproduction, unchanged;</li> <li>4. stable quality between different batches;</li> <li>5. Superior chemical stability, to assure the longest use of the printer head, low Corrosion to printer head;</li> <li>6. Low odor, no Pollution, harmless to body.</li> </ol>
Applications	coated banner, PVC flex banner, Tarpaulin, vinyl, self, PET film, Sticker, One way vision, Mesh, Wall Paper, PP paper, Photo
storage tips:	<p>a) Avoid contacting with skin, eyes and clothing. Do not ingest or inhale. After use, wash hands with soap and water.</p> <p>b) Store in cool and dry place, avoid freezing, and keep away from direct sunlight.</p> <p>c) Don't mix with other kind of ink when use, or it will damage your print head!!!</p>

Specifications are subject to change without notice.



# ONE-WAY VISION

PERFORATED VINYL STICKERWINDOW ONE WAY VISION

[www.colorwinmachines.com](http://www.colorwinmachines.com)

# One Way Vision

## Features



**Perforated vinyl stickerwindow one way vision**



**Weather resistant**  
Excellent applicability for different climate



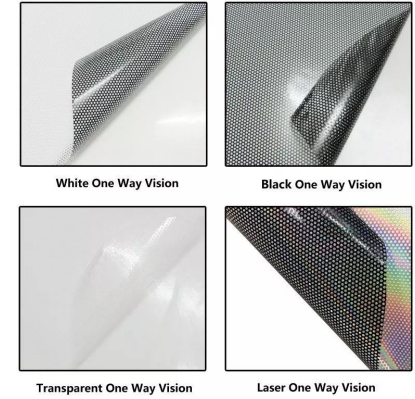
**Can be customized**  
suitable for solvent and eco-solvent printing



**Widely used**  
Excellent applicability for different climate



**A material**  
**Black White Self Adhesive Printable Window Covering See Through oneWay Vision Film perforated vinyl sticker window mesh vinyl**



## ● Specification

Product name	one way vision film/microperforated
Color	White
Film Thickness	120/140/160micron
Width	0.914/1.07/1.27/1.37/1.52m
Usage	advertisement

Specifications are subject to change without notice.



# ***ADHESVIE STICKER VINYL***

***PVC SELF ADHESIVE VINYL/SAV VINYL***

# Adhesive Sticker Vinyl

## Features



### BANNER PRODUCTS

We have a wide range of products to meet all your needs



### Use eco-friendly coating

Black blue white self adhesive vinyl has lower shrinkage and better color stability than other films resulting in up to 2-3 year durability.



### Can be adhered to walls

windows. phones. laptops. metal, glass, ceramic, porcelain and other smooth surfaces.



### Flexible and variable color

pattern, picture as any of your personality style designed and made on demand.



### Excellent printability

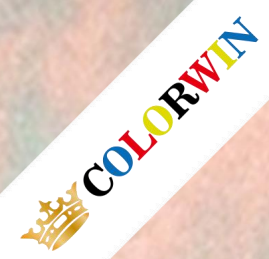
conversion and application characteristics



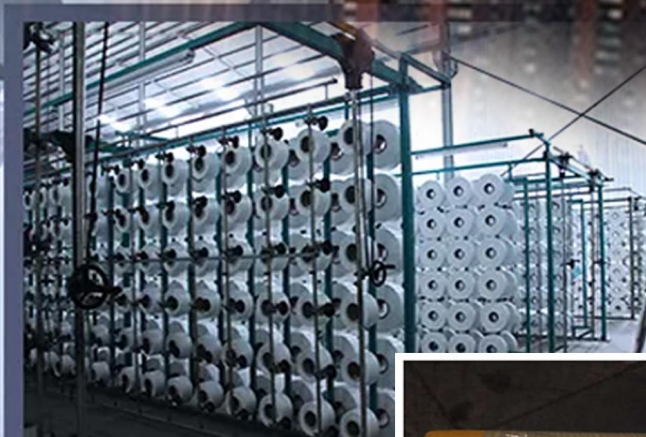
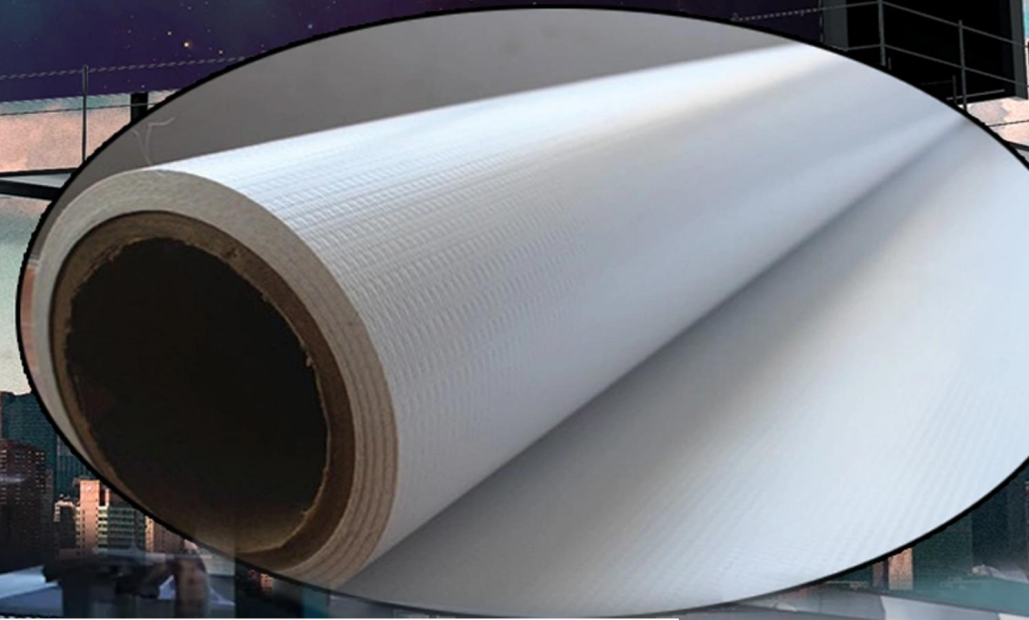
## ● Specification 参数

Productname	PVC Self adhesive vinyl/SAVinyl
PVC film thickness	60-100micron
Release paper weight	120~140gsm
Glue thickness	20+2micron
Gluecolor	White/Black/Transparent
Adhesive	Foreverglue
Size	0.914/1.07/1.27/1.37/1.52*50M
Competible ink	eco-solvent/solvent/UV

Specifications are subject to change without notice.

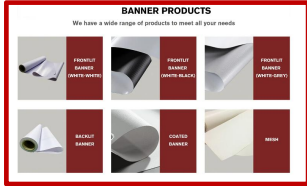


# FLEX BANNER STICKER ROLLS



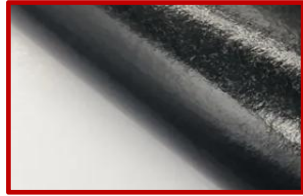
# Flex Banner

## Features



### BANNER PRODUCTS

We have a wide range of products to meet all your needs



### Excellent tack

The adhesive is permanent solvent-based, can be stick very well.



### one-way vision

Can be used for many applications, including windows, car decals, signs templates, scrapbooks.



### Fence Wrap

Strong bands around the edges



### Product Banner

Custom branding available to promote your company



## ● Specification

Description	Yarn&Construction	Available Width	Packing
FrontlitGlossy/Matte	200*300(18*12)260gsm	1.02m--3.20m	Craft Paper
FrontlitGlossy/Matte	200*300(18*12)280gsm	1.02m--3.20m	Craft Paper
FrontlitGlossy/Matte	200*300(18*12)320gsm	1.02m--3.20m	Craft Paper
FrontlitGlossy/Matte	200*300(18*12)340gsm	1.02m--3.20m	Craft Paper
FrontlitGlossy/Matte	200*300(18*12)380gsm	1.02m--3.20m	Craft Paper
FrontlitGlossy/Matte	300*500(18*12)340gsm	1.02m--3.20m	Craft Paper
FrontlitGlossy/Matte	300*500(18*12)380gsm	1.02m--3.20m	Craft Paper
FrontlitGlossy/Matte	300*500(18*12)410gsm	1.02m--3.20m	Craft Paper
FrontlitGlossy/Matte	300*500(18*12)440gsm	1.02m--3.20m	Craft Paper
FrontlitGlossy/Matte	300*500(18*12)510gsm	1.02m--3.20m	Craft Paper
FrontlitGlossy/Matte	500*500(9*9)340gsm	1.02m--3.20m	Craft Paper
FrontlitGlossy/Matte	500*500(9*9)380gsm	1.02m--3.20m	Craft Paper
FrontlitGlossy/Matte	500*500(9*9)410gsm	1.02m--3.20m	Craft Paper
FrontlitGlossy/Matte	500*500(9*9)440gsm	1.02m--3.20m	Craft Paper
FrontlitGlossy/Matte	500*500(9*9)510gsm	1.02m--3.20m	Craft Paper